



PLYMOUTH TUBE CO USA®

TRENT PRODUCED ELECTROPOLISHED SANITARY AND COLD DRAWN PRODUCTS

Acquired August 11, 2007. formerly the Trent Tube Trentweld Plant, now the newest Plymouth Tube Company Facility. This 200,000 sq foot facility houses production of drawn, sanitary, pharmaceutical, and engineered (value-added) products. This facility services many markets including chemical, petrochemical, pulp and paper, aerospace, mechanical, nuclear utility, dairy, food and beverage, and pharmaceutical.

Plymouth Products

SANI-FLOW® Tubing

- Superior flow characteristics, easier cleanability, and exceptional purity
- SANI-FLOW® tubing up through 4" (102 mm) has IDs that are mechanically polished to 20 microinch (0.50 micron) Ra or better.
- *Specifications:* ASTM A270-S2, A249 & A269 (ASME BPE & 3A specifications also available upon request)
- *Alloys:* 304, 304L, 316, 316L & AL-6XN® (others available on request)

Electropolished Tubing

- 10max® and 15max® offer contaminant-free inner surface finish with superior corrosion resistance.
- *Specifications:* ASTM A249, A269, & A270
- *Alloys:* 304, 304L, 316, 316L & AL-6XN®
- *Surface Finish:* 10max® - 10 microinch (0.25 micron) Ra or better; 15max® - 15 microinch (0.50 micron) Ra or better (other EP finishes available upon request)

Aircraft / Aerospace Tubing

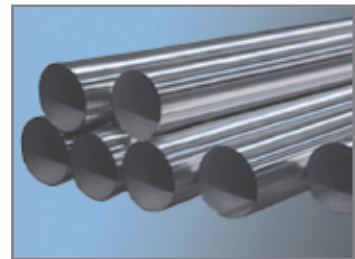
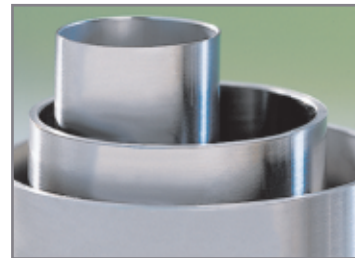
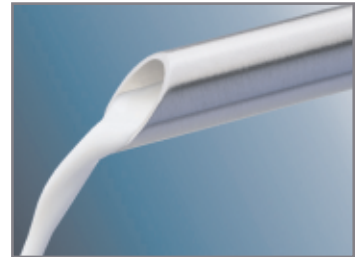
- Continuously working with specialized distributors, typical applications include hydraulic line, sanitary service, ducting, and structural components.
- *Size Range:* 0.125" to 4" (3mm to 102mm) OD
- *Specifications:* AMS 5565, 5566, 5557, 5558, 5559, 5561, 5567, 5568, 5575, 5576, & 5588; MIL-T-6737, 6845, 8504, 8806, & 8808.
- *Alloys:* 21-6-9, types 304/304L, 321 stainless steel, 17-7 PH stainless steel, 625, AL-6XN®

Engineered Products

- A variety of surface finishes to accommodate practically any application
- Mechanically polished OD
- Longitudinal belt polish, rotary polish, & electropolish to 10 microinch (0.25) Ra or better (other finishes available upon request)
- Precision cut available to close tolerance lengths and end configurations
- Flaring and Flanging
- Beveling
- Notching
- Drilling
- Bending

Processing

- Gas Tungsten Arc Welding
- Plasma Arc Welding
- Plug Drawing
- Bar Drawing
- Sinking
- Oxide Annealing
- Pickling
- Passivation



2506 Young Street

East Troy, WI 53120

Corporate: 800-323-9506

Fax: 262-642-9571

email: info@plymouth.com

website: www.plymouth.com